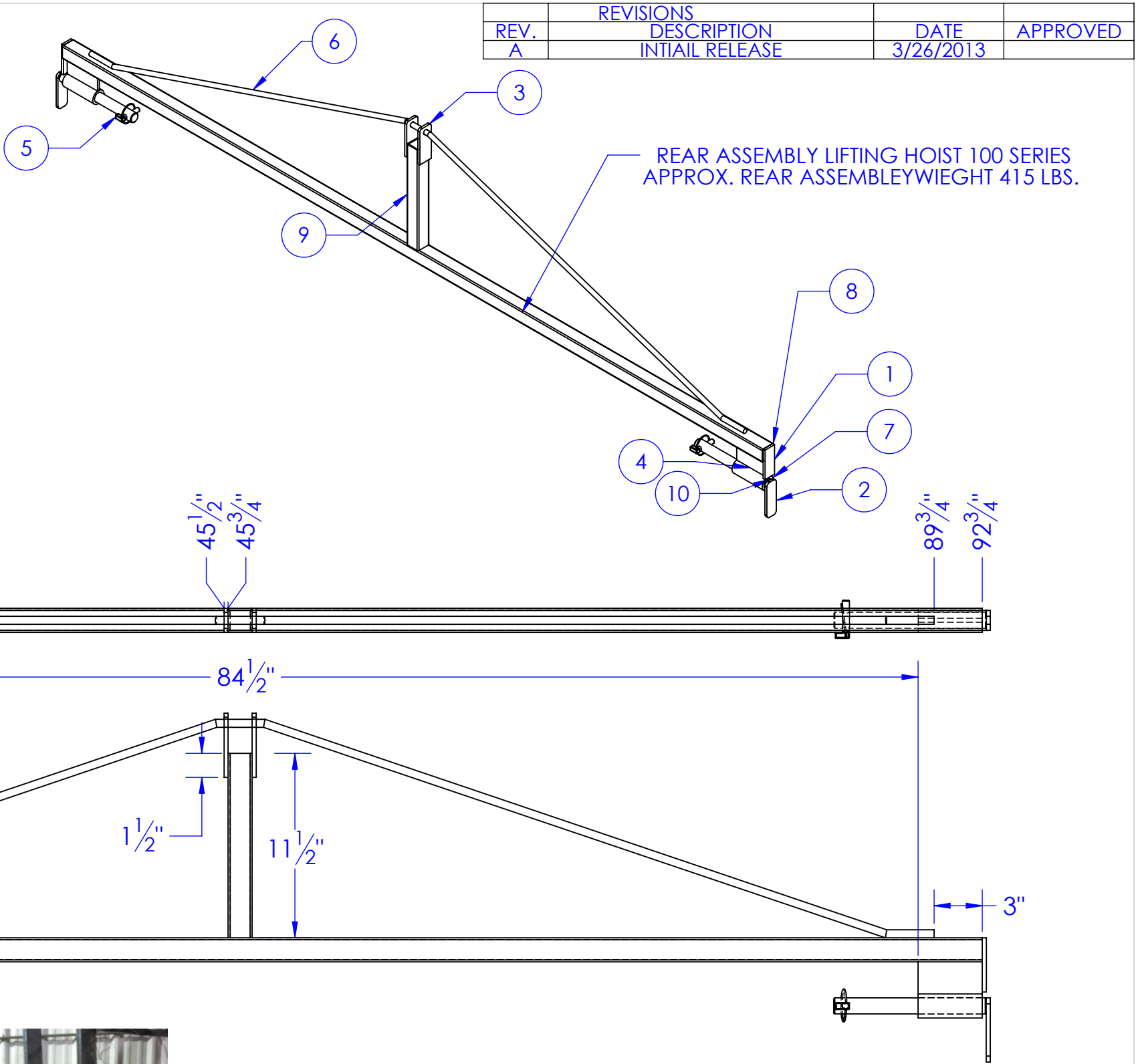


ITEM NO.	PART NUMBER	DESCRIPTION	MATERIAL	DRAWING #	QTY.
1	FI .25 X 1.25 L 3.375	LENGTH: 3-3/8"	FI 1/4" x 1-1/4"	STOCK	2
2	FI .25 X 1.25 L 4 coped edges	LENGTH: 4"	FI 1/4" x 1-1/4"	STOCK	2
3	FI .25 X 1.5 L 4 with hole	LENGTH: 2"	FI 1/4" x 1-1/2"	STOCK	2
4	FI .25 X 2 L 4	LENGTH: 4"	FI 1/4" x 2"	STOCK	2
5	HD-PL .4375 HD	7/16 Lynch Pin.		STOCK	2
6	R&D ROUND top stringer	TOP STIFFENER	ST-HR 1/2 ROUND	95-1110	1
7	ST-MT 1.500x1.032 L 4	LENGTH: 4"	ST-MT 1.500X1.032	STOCK	2
8	ST 1.5 x .120 L 92.5	LENGTH: 92-1/2"	ST 1-1/2 x 11 ga	STOCK	1
9	ST 1.5 x .120 L 11.5	LENGTH: 11-1/2"	ST 1-1/2 x 11 ga	STOCK	1
10	STC-CR 1x4142 L 9.5	LENGTH: 9-1/2"	CF ANN 4142 1 RD	95-1110	2



**PROPRIETARY AND CONFIDENTIAL**  
THE INFORMATION CONTAINED IN THIS DRAWING IS THE SOLE PROPERTY OF <INSERT COMPANY NAME HERE>. ANY REPRODUCTION IN PART OR AS A WHOLE WITHOUT THE WRITTEN PERMISSION OF <INSERT COMPANY NAME HERE> IS PROHIBITED.

UNLESS OTHERWISE SPECIFIED:  
DIMENSIONS ARE IN INCHES  
TOLERANCES:  
FRACTIONAL  $\pm 1/16$   
ANGULAR: MACH  $\pm 1$  BEND  $\pm$   
TWO PLACE DECIMAL  $\pm 0.10$   
THREE PLACE DECIMAL  $\pm 0.005$   
MATERIAL  
DO NOT SCALE DRAWING

	NAME	DATE	P.O. BOX 248, SABETHA KS. 66534 (785) 284-3674 FAX (785) 284-3931		
DRAWN	HEATH	3/26/2013	<div>TRIPLE C</div> <div>INC.</div>		
PART #	R&D REAR				
ASM #	ASM HOIST 100				
COMMENTS: REAR ASSEMBLY LIFTING HOIST 100 SERIES			SIZE B	DWG. NO. 95-1110	REV A
			SCALE: 1:8	WEIGHT: 34.00	SHEET 1 OF 1